



NUTS AND BOLTS: SELECTING A SPACE

SELECTING A SPACE

All individuals and groups will receive a random selection time. Students may select a space beginning at their selection time or any point after that time during the selection hours on February 28-March 2:

- Tuesday, February 28: 10 AM-6 PM
- Wednesday, March 1: 10 AM-6 PM
- Thursday, March 2: 10 AM-6 PM

For students in a roommate group, any member of the group may go in during the group's time to select spaces for all group members. Once a space has been selected, no changes to a student's assignment for next year will be made until the room freeze is lifted the third week of the fall semester. Discuss [at least three housing options](#) with your group and to know each other's level of comfort with selecting a particular community or pricing option.

**Xavier University is a two year residency required institution.
All students must live on campus for their second year at**

HOUSING SELECTION ASSISTANCE

- 1.Zoom during Selection Hours: Use the links in email sent with your selection time
- 2.Email: reslife@xavier.edu or griffint5@xavier.edu
- 3.Call: 513-745-3203

We can help with:

- Troubleshooting and pricing questions
- Checking who is already assigned to other beds in a unit or suite

We cannot help with:

- Removing a student so a friend can join you
- Adding additional spaces to a filled location

Detailed Instructions for Each Step of the Process can be found on our website under Housing Self Service



NUTS AND BOLTS: BUENGER HALL

- All suites available on third and fourth floors
- Floors are single gender by suite but co-ed on floor
- Suites have either single bedrooms or double bedrooms
- 1.5 bathrooms per suite
- 1 suite for six exists on 4th floor

Ideal for students:

Wanting suite style living

Wanting a cheaper housing option than apartments

Discuss at least three housing options with your group.

NUTS AND BOLTS: JUSTICE HALL

- Suites hold either four, six or eight students total
- Most suites hold six, followed by the eights. There are very few four person
- suites. Suites are all double bedrooms.
- Odd numbered suites faces out to street.
- Even numbered suites face out to the quad.

Ideal for students:

Wanting to live with a large number of students

Wanting to live closest to the dining commons

Detailed Instructions for Each Step of the Process can be found on our website under Housing Self Service



NUTS AND BOLTS: KUHLMAN HALL

- Top two floors are all sophomore students
- 5th floor is single gender by wing
- 6th floor is co-ed
- Two rooms share one bathroom

Ideal for students:

Wanting a more private bathroom

Wanting the cheapest available residence hall option

Discuss at least three housing options with your group.

NUTS AND BOLTS: COMMONS APARTMENTS

- Very limited 4 person apartments remain available
- Also some spaces for individuals or pairs with already assigned juniors and seniors

Ideal for students:

Wanting a single bedroom in a shared apartment

NUTS AND BOLTS: UNIVERSITY APARTMENTS

- 1 Bedroom units for three students
- Renovated within last 10 years

Ideal for students:

Wanting to live with two people

Detailed Instructions for Each Step of the Process can be found on our website under Housing Self Service.



NUTS AND BOLTS: MANOR HOUSE

- These are studio apartments holding 2 students per apartment
- There are five separate towers with units
- Laundry is located in the middle tower
- There is an outdoor courtyard outside each tower entrance

Ideal for students:

Wanting apartment living

Wanting the cheapest apartment option

Discuss at least three housing options with your group.

NUTS AND BOLTS: VILLAGE APARTMENTS

- Units 1-29 are four person apartments with two double bedrooms
- Units 1-6 are one story units with entrances off the courtyard
- Units 7-29 are two story units overlooking the courtyard
- Units 30-56 are four person apartments with single bedrooms, called the towers

Ideal for students:

Wanting apartment living either in a double or single bedroom

Wanting to live more independently without a RA on the same floor

Detailed Instructions for Each Step of the Process can be found on our website under Housing Self Service

FAQS

**YOU'VE ASKED,
WE'VE ANSWERED!**



THE FOLLOWING QUESTIONS ARE COMMON QUESTIONS OUR OFFICE RECEIVES AND ALSO FROM THE XAVIER UNIVERSITY PARENT'S FACEBOOK PAGE. THIS IS NOT AN EXHAUSTIVE LIST, SO PLEASE HAVE YOUR STUDENT CONTACT OUR OFFICE IF ADDITIONAL QUESTIONS REMAIN.

What if my student forgets to apply by the deadline?

They will apply in late March and will be assigned to any remaining available space.

What housing options are available?

Halls: Buenger Hall, Kuhlman Hall, and Justice Hall

Apartments: Commons, University, or Village Apartments, Manor House

You can learn more about each option on our website. Meal plans NOT required for students living in apartments.

Will my student get to live in Justice Hall?

Justice Hall has a capacity of 533 students. There are more than 1,000 current first-year students who will live on-campus so more than half of all rising sophomores will NOT live in Justice. Your student and their group need to have several back-up plans!

How are selection times generated?

Times are generated randomly after the application closes by the housing software. No preference given to application submission time, credits or any other criteria.

Do Honors Program students receive priority?

Honors Program students only receive priority their first year living on campus to form the Honors Community in Buenger. Several years ago we provided rising sophomores priority housing and there quite simply was no demand for such priority as most Honors students select at least one non-Honors student to be part of their groups.

FAQS

**YOU'VE ASKED,
WE'VE ANSWERED!**



What is the best housing option for sophomores?

This differs for each student in the process and is really dependent on the kind of experience they are hoping to have during their time at Xavier!

Why does my student need to consider at least three options?

Since we have specific inventory of available spaces, depending on the selection time, it is possible their first choice may no longer be available. Having at least three options is important so students can seamlessly select a space.

What are options for a sophomore wanting to meet potential roommates?

Students may use their My College Roomie profile to connect with potential roommates.

Can students see spaces beforehand?

For safety reasons, we are unable to show spaces in advance. Video tours of each area are available on our website under Residences.

How does the lottery work with respect to a group ? Does the best number pick for group of 4?

Each student receives a time but the best time then becomes the time for the entire group . Any of the students in the group may log in at that time to select for the group or they can all meet up so they are together when they pick. Only one student should select for the group .

FAQS

**YOU'VE ASKED,
WE'VE ANSWERED!**



Why does it cost the same for a 4 vs 6 person suite in Justice?

We base our housing costs on building type (apartment-style, traditional style, suite style) in addition to how many students share a bedroom. Four person suites in Justice have two people per room just like the six person suite, so the cost is the same.

My student is an RA candidate. What do they need to do?

All candidates are asked to participate in the process with the assumption they will not get the position. The Office of Residence Life will assign the candidate to an RA room if they are selected.

Why does the process only allow 4 to go in together when their are 6 or 8 students wanting to room together?

We previously allowed for students to form groups of six and eight. However, the only six and eight person option is Justice. Inevitably, many groups did not have options left when their selection time came around, so many groups had to break up into a group of four and a group of two in order to find housing. As you can imagine, this created many conflicts and hurt feelings for the students. Our hope is that with a group size of four, less groups are broken up.

Six individuals wanting to live together can form a group of four and a group of two. If your student has a very early time, the group with the early time would drop back and allow the later time to select. Both groups should select their spaces at the same time.

Similarly, eight individuals can form two groups of four and select at the later group's time.

NOTE: The earlier group is given no priority to live with their preferred second group. In these scenarios, if the group with the earlier time does not wait until the later group's time another group may claim the remaining spots.

FAQS

**YOU'VE ASKED,
WE'VE ANSWERED!**



Why is housing priority given to only a few athletic teams & not given to ALL athletic teams?

Housing priority for athletic teams is determined by the Athletic Department. Traditionally, they have selected a total of three teams to receive priority. Currently those teams are men's basketball, women's basketball and volleyball.

My student has a group where they are the 5th or 6th person in the group. They all seem to want to live in Justice. What can they do?

For Justice, the students may form a group of four and two or two groups of three and then all go in and select at the later group's time. If there are no six person suites remaining when they select, they may have to select an eight person suite and would then have two random roommates as well.

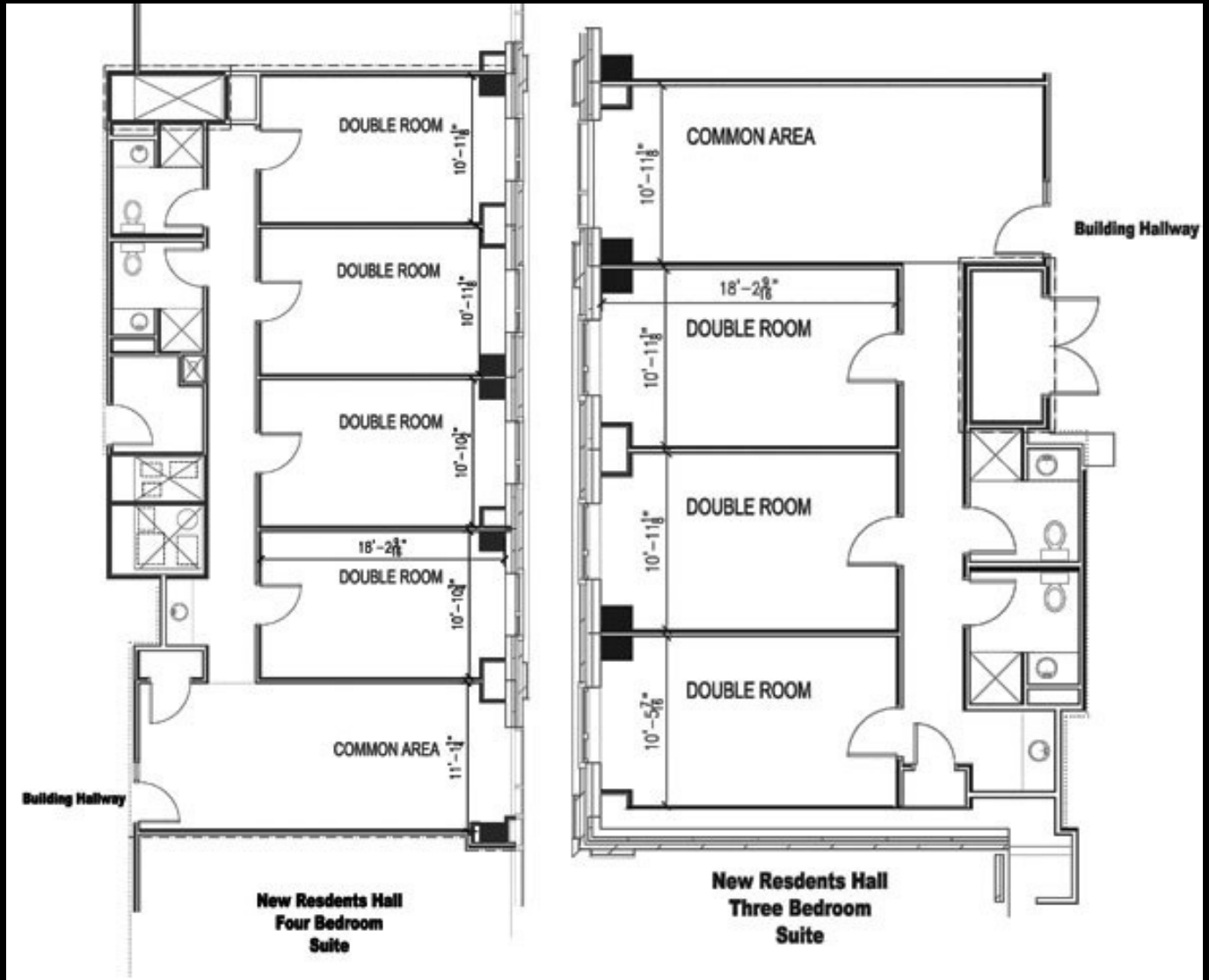
Why don't you conduct selection during evening or on weekends?

We think it is important to be readily available for students to be able to answer in-the-moment questions or troubleshoot issues. Additionally, students work on weekends, as well as traveling away from campus. Our experience is that at least one member of the group is available during the group selection time. By conducting the process during regular business hours, we can ensure your student a near-immediate response to lessen stress or confusion!

Does my student have to form a roommate group?

They do not! Each year many students chose to participate as an individual and have random roommates. At times, we may have to move around students within the building they select to help consolidate space.

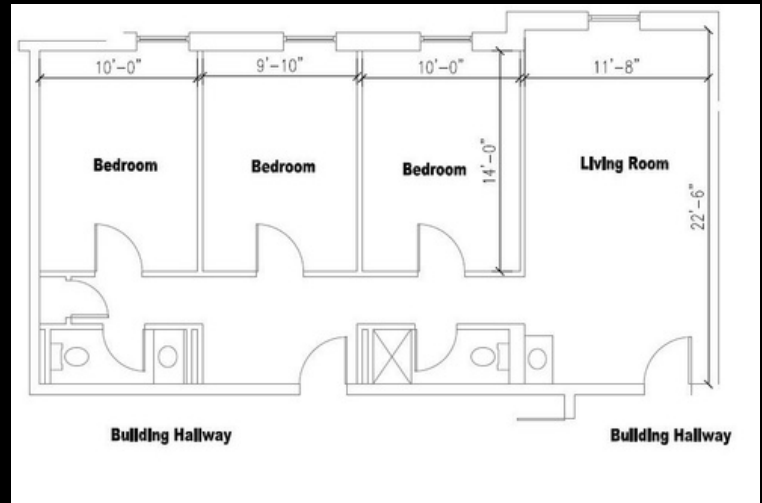
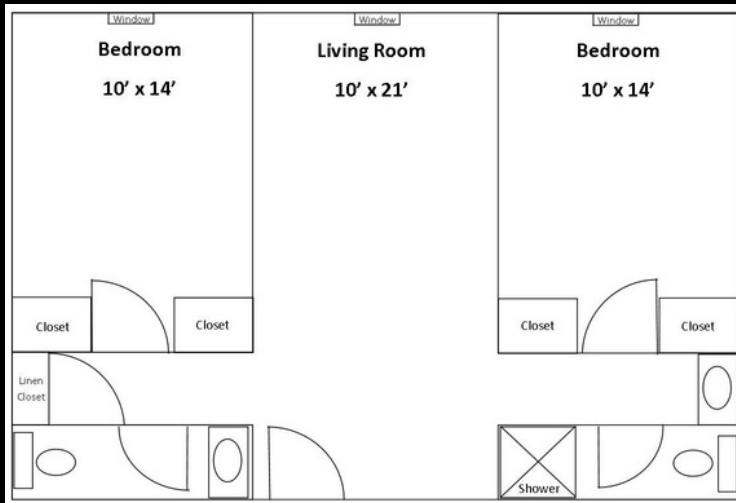
FLOOR PLANS



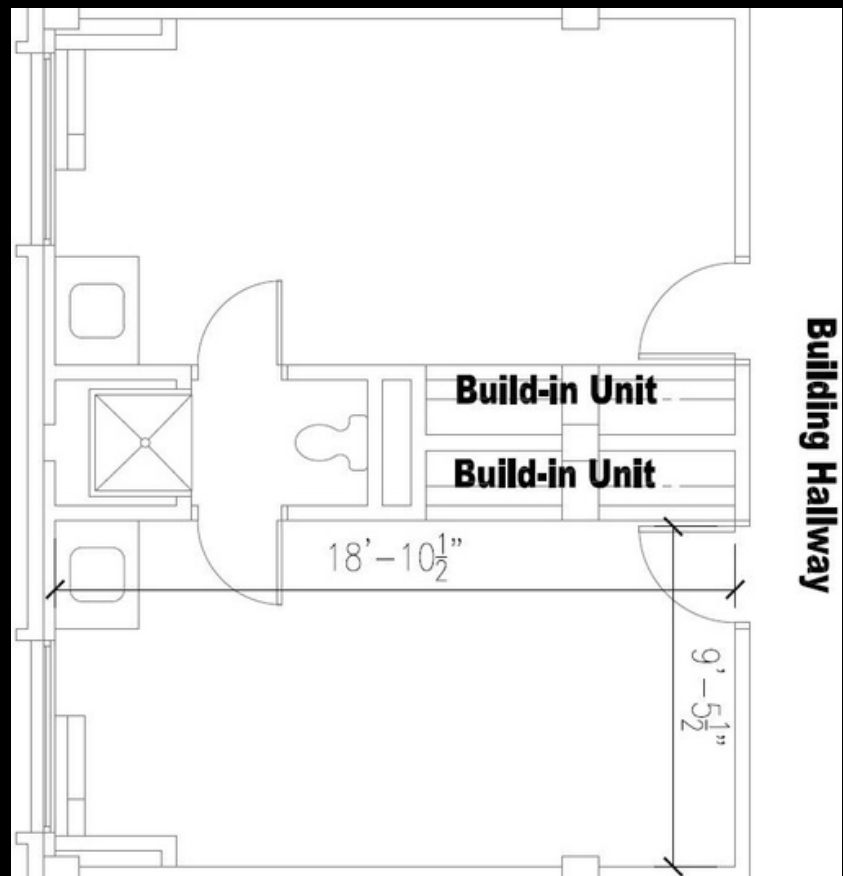
JUSTICE HALL SUITES

FLOOR PLANS

THE 3RD AND 4TH FLOORS OF BUENGER ARE RESERVED FOR RISING SOPHOMORES (CO-ED FLOORS)

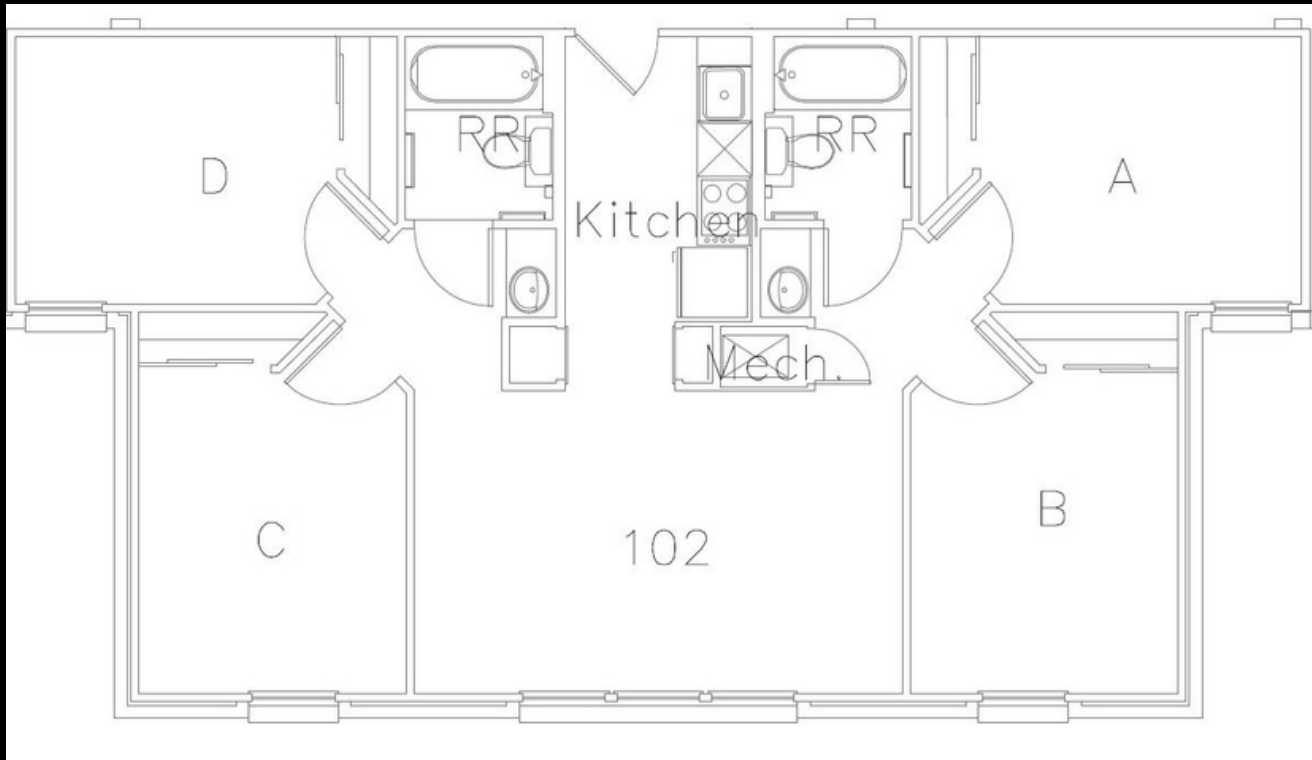


THE TOP FLOORS OF KUHLMAN ARE RESERVED FOR RISING SOPHOMORES

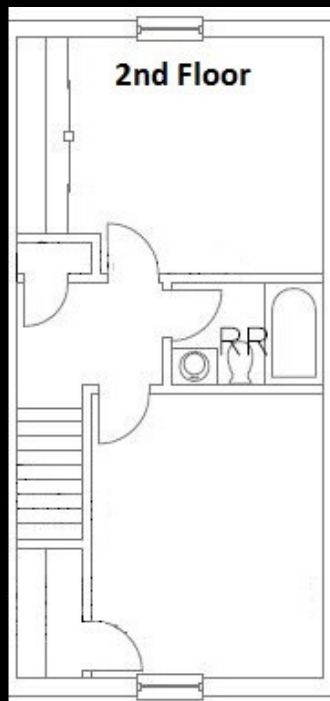
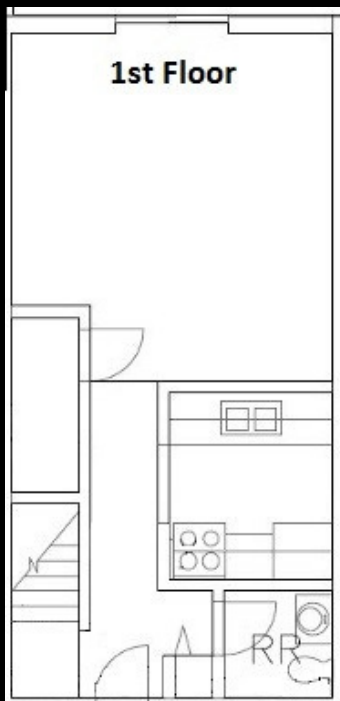


FLOOR PLANS

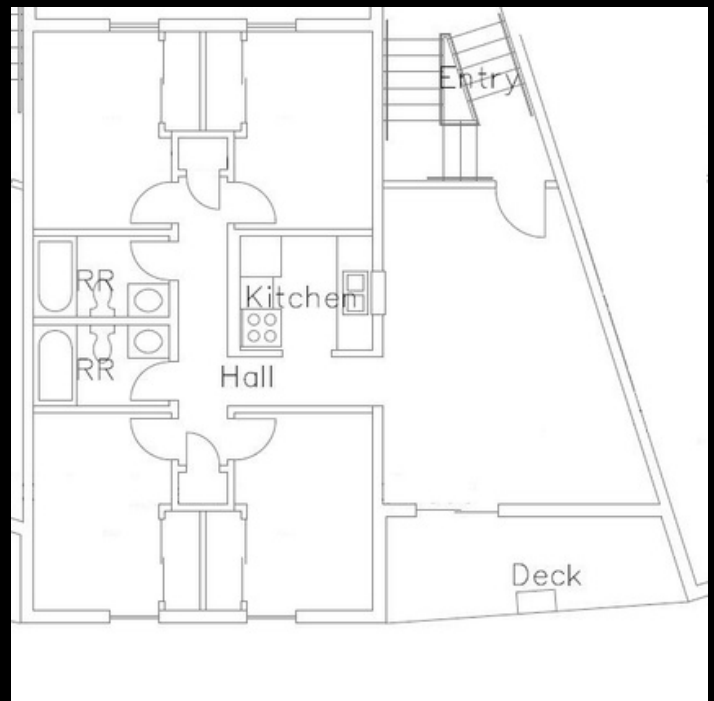
COMMONS APARTMENTS



VILLAGE APARTMENTS



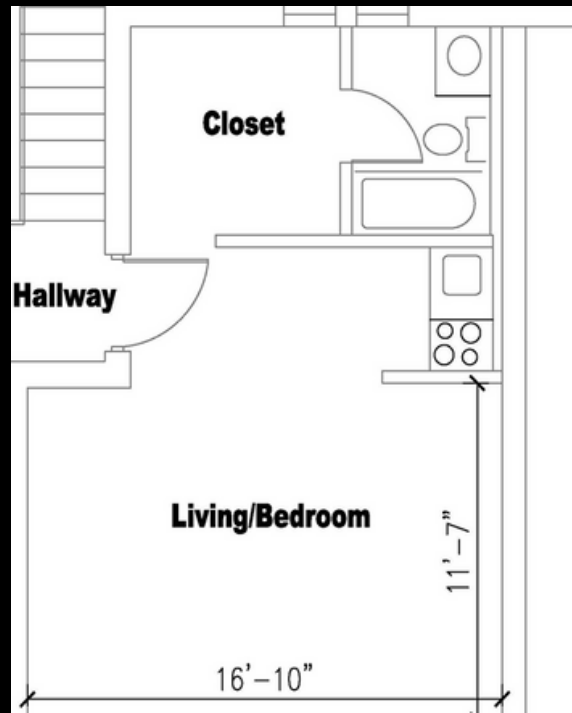
Two Bedroom Townhouse



Four Person Single Bedrooms

FLOOR PLANS

MANOR HOUSE



UNIVERSITY APARTMENTS

