

Rising Sophomore Housing Selection Overview

This housing selection process is for students in their first year at Xavier to select housing for the 2024-2025 academic year. This includes:

- Students who started at Xavier in Fall 2023 as first years
- Students who started at Xavier in Fall 2023 as new transfer students
- Students who started at Xavier in Spring 2024

Process Dates

Monday, January 22, 2024	Housing Application Opens on Housing Self-Service
Monday, January 22, 2024	Roommate pairing opens on My College Roomie
Friday, February 9, 2024	Housing Accommodation Deadline with Accessibility & Disability Resources
Thursday, February 15, 2024	Muskie Match Up Pairing Event at 6 PM, Clocktower
Monday, February 19, 2024	Housing Application Due by 11:59 PM ET
Tuesday, February 20, 2024	Roommate Group formation Deadline at 10 AM
Thursday, February 22, 2024	Justice Hall Groups Notified
Thursday, February 22, 2024	Selection Times Announced to Xavier Email
Thursday, February 22, 2024	Residential Area Tours
Monday, February 26, 2024	Room Selection Day 1
Tuesday, February 27, 2024	Room Selection Day 2



Xavier University is a two year residency required institution. All students must live on campus for their second year at Xavier unless commuting from a permanent family address within 35 miles of campus.

NEW - Justice Hall Suite Process - NEW

Justice Hall Group Size Expanded

Justice Groups of 6 and 8 Notified in Advance if Suite Secured Automatic Placement of Justice Groups into a Suite

- Students interested in Justice Hall will be able to form a group of either 6 or 8 students total.
- NOTE: The only location which holds more than 4 per room is Justice Hall.
- Priority for Justice will be given to **full** groups of 6 or **full** groups of 8.
- Students in a full group of 6 or 8 will not self-select a suite, they will be assigned into one.
- Groups selected to live in a suite agree to live in the suite assigned.
- Full groups will be notified prior to selection time if they receive a suite.
- Groups not selected will be given time to reconfigure their group into smaller configurations to fit other available buildings.

Justice holds 500 students but the number needing housing is 1,086.

Thus not all students will get to live in Justice.

Why the change? Students asked for this change to be considered and we listened.

But what about the smaller groups or individuals who want to live in Justice?

Join the Random Group List!

Who: Students open to living with completely random roommates

Where: Stop by the Res Life office in the Musketeer Mezzanine to sign up.

By When: Friday, February 16th at 5 PM

Number of Justice Suites

6 Person Suites
45
Suites

8 Person Suites
20
Suites

Suites consist of double bedrooms



SUBMITTING HOUSING APPLICATION

All students must complete an updated housing application for the next academic year.

Deadline: Monday, February 19th at 11:59 PM ET

How To

1. Log in to Housing Self-Service
2. Navigate to Applications tab of left menu
3. Click 2024-2025 Rising Sophomore Application
4. Sign housing application and complete all sections

Detailed Instructions for Each Step of the Process can be found on our website under Housing Self Service

HOUSING ACCOMMODATION PROCESS

Students requesting a housing accommodation work with Accessibility & Disability Resources (ADR) for that process. Contact disabilityresources@xavier.edu for more information.

Deadline: Monday, February 19th at 5 PM ET

Students approved for accommodations will not self-select space but will be preassigned. If you are approved for an accommodation your assignment will be made into any space which meets that need. For example, if approved for a single, you may be assigned to Buenger, Justice or Village in addition to Commons.



FORM ROOMMATE GROUP

Students have the option to form a roommate group with other students using My College Roomie.

Deadline: Tuesday, February 20th at 10 AM ET

How To

1. The day following completing housing application, students will receive welcome email from My College Roomie (MCR).
2. Log in to MCR using Xavier email and password.
3. Update your profile and questionnaire
4. Review matches, search for students, and send friend requests.
5. Send and accept roommates requests from friends

Students will only be viewable in MCR after completing above steps.

[Detailed Instructions for Each Step of the Process can be found on our website under Housing Self Service section](#)

Group Size Limits by Building

4 People

Buenger
Kuhlman
Commons
Village
Justice (very limited)

2 People

Manor House

3 People

University Apartments

6 People

Justice

8 People

Justice

Individuals may select into any space except Justice Hall. Individuals interested in Justice should sign up for the Random Group List. See page 2.



SELECT A ROOM

All individuals and groups will receive a random selection time, unless they are selected to be preassigned into a Justice suite. Students may select a space beginning at their selection time or any point after that time during the selection hours on February 26-27.

- **Monday, February 26: 9 AM-5 PM**
- **Tuesday, February 27: 9 AM-5 PM**

For students in a roommate group, any member of the group may go in during the group's time to select spaces for all group members. Once a space has been selected, no changes to a student's assignment for next year will be made until the room freeze is lifted the third week of the fall semester. Discuss **at least three housing options** with your group and to know each other's level of comfort with selecting a particular community or pricing option.

Need

Help Selecting?

Join us on Zoom during room selection days for help.

Links will be sent out with room selection times.

Email: reslife@xavier.edu
Call: 513-745-3203

Detailed Instructions for Each Step of the Process can be found on our website under Housing Self Service

If you secured space in the Justice suite lottery, your group is all set! No other action needed.

If your group was not selected for a Justice suite, you will receive a room selection time to select into other available options.



Buenger Showcase

- All suites on third and fourth floors
- Suites are single gender, co-ed floors
- Suites have either single bedrooms or double bedrooms
- 1.5 bathrooms per suite
- 1 suite for six exists on 4th floor

Ideal for students:

- Wanting suite style living
- Wanting a more affordable housing option than apartments

Justice Showcase

- Suites hold either four, six or eight students total.
- There are very few four person suites.
- Suites are all double bedrooms.

Ideal for students:

- Wanting to live with a large number of students
- Wanting to live closest to the dining hall

Discuss at least three housing options with your group.



Detailed Instructions for Each Step of the Process can be found on our website



Kuhlman Showcase

- Top floors are all sophomore students
- 5th floor is single gender by wing
- 6th floor is co-ed
- Two rooms share one bathroom

Ideal for students:

- Wanting a more private bathroom
- Wanting the most affordable residence hall option

Commons Showcase

- Very limited 4 person apartments remain available
- Also some spaces for individuals or pairs with already assigned juniors and seniors

Ideal for students:

- Wanting a single bedroom in a shared apartment

Discuss at least three housing options with your group.



Detailed Instructions for Each Step of the Process can be found on our website

Manor House Showcase



- These are studio apartments holding 2 students per apartment
- There are five separate towers with units
- Laundry is located in the middle tower
- There is an outdoor courtyard outside each tower entrance

Ideal for students:

- Wanting apartment living
- Wanting a more affordable apartment option

University Apt. Showcase

- 1 Bedroom units for three students
- Renovated within last 10 years
- Small community of 40 students
- In building laundry

Ideal for students:

- Wanting to live with three people total
- Wanting the most affordable apartment option

Discuss at least three housing options with your group.



Detailed Instructions for Each Step of the Process can be found on our website



Village Showcase

- Units 1-29 are four person apartments with two double bedrooms
- Units 1-6 are one story units with entrances off the courtyard
- Units 7-29 are two story units overlooking the courtyard
- Units 30-56 are four person apartments with single bedrooms, called the towers

Ideal for students:

- Wanting apartment living either in a double or single bedroom
- Wanting to live more independently without a RA on the same floor

Discuss at least three housing options with your group.

Room Wait Lists

We recognize all students may not secure space in a preferred location.

After selecting space, students may place themselves, as individuals, on wait list in Housing Self-Service under Room Selection--> Room Wait Lists.

Over summer as cancellations occur, we will adjust assignments as possible. This is more easily done for individuals rather than groups.

Detailed Instructions for Each Step of the Process can be found on our website

FAQS

YOU'VE ASKED,
WE'VE ANSWERED!



THE FOLLOWING QUESTIONS ARE COMMON QUESTIONS OUR OFFICE RECEIVES AND ALSO FROM THE XAVIER UNIVERSITY PARENT'S FACEBOOK PAGE. THIS IS NOT AN EXHAUSTIVE LIST, SO PLEASE HAVE YOUR STUDENT CONTACT OUR OFFICE IF ADDITIONAL QUESTIONS REMAIN.

What if I forget to apply by the deadline?

They will apply in late March and will be assigned to any remaining available space.

What housing options are available?

Halls: Buenger Hall, Kuhlman Hall, and Justice Hall

Apartments: Commons, University, or Village Apartments, Manor House

You can learn more about each option on our website. Meal plans NOT required for students living in apartments.

Will I get to live in Justice Hall?

Justice Hall has a capacity of 500 students. There are more than 1,000 students in this housing selection process so all rising sophomores will NOT live in Justice. Your student and their group need to have several back-up plans!

How are selection times generated?

Times are generated randomly after the application closes by the housing software. No preference given to application submission time, credits or any other criteria.

Do Honors Program students receive priority?

Honors Program students only receive priority their first year living on campus to form the Honors Community in Buenger. Several years ago we provided rising sophomores priority housing and there quite simply was no demand for such priority as most Honors students select at least one non-Honors student to be part of their groups.

FAQS

**YOU'VE ASKED,
WE'VE ANSWERED!**



What is the best housing option for sophomores?

This differs for each student in the process and is dependent on the kind of experience they hope to have!

Why do I need to consider at least three options?

Since we have specific inventory of available spaces, depending on the selection time, it is possible their first choice may no longer be available. Having at least three options is important so students can seamlessly select a space.

What are options for me to meet potential roommates?

Students may use their My College Roomie profile to connect with potential roommates.

We will also host a Muskie Match Up event to meet potential roommates.

Students or smaller groups interested in Justice Hall may join the Random Group List at the main Res Life office.

Can I see spaces beforehand?

For safety reasons, we are unable to show spaces in advance. Video tours of each area are available on our website under Residences.

Do I have to form a roommate group?

You do not! Each year many students chose to participate as an individual and have random roommates. At times, we may have to move around students within the building they select to help consolidate space.

I am a RA candidate. What do I need to do?

All candidates are asked to participate in the process with the assumption they will not get the position. The Office of Residence Life will assign the candidate to an RA room if they are selected.

FAQS

YOU'VE ASKED,
WE'VE ANSWERED!



Why is housing priority given to only a few athletic teams & not given to ALL athletic teams?

Housing priority for athletic teams is determined by the Athletic Department. Traditionally, they have selected a total of three teams to receive priority. Questions can be referred to their department.

How does the lottery work with respect to a group ? Does the best number pick for group?

Each student receives an individual time but the best time then becomes the time for the entire group . Any of the students in the group may log in at that time to select for the group or they can all meet up so they are together when they pick. Only one student should select for the group.

Why does it cost the same for a 4 vs 6 person suite in Justice?

We base our housing costs on building type (apartment-style, traditional style, suite style) in addition to how many students share a bedroom. Four person suites in Justice have two people per room just like the six person suite, so the cost is the same.

My student has a FULL group of 6 or 8 for Justice. What do they do?

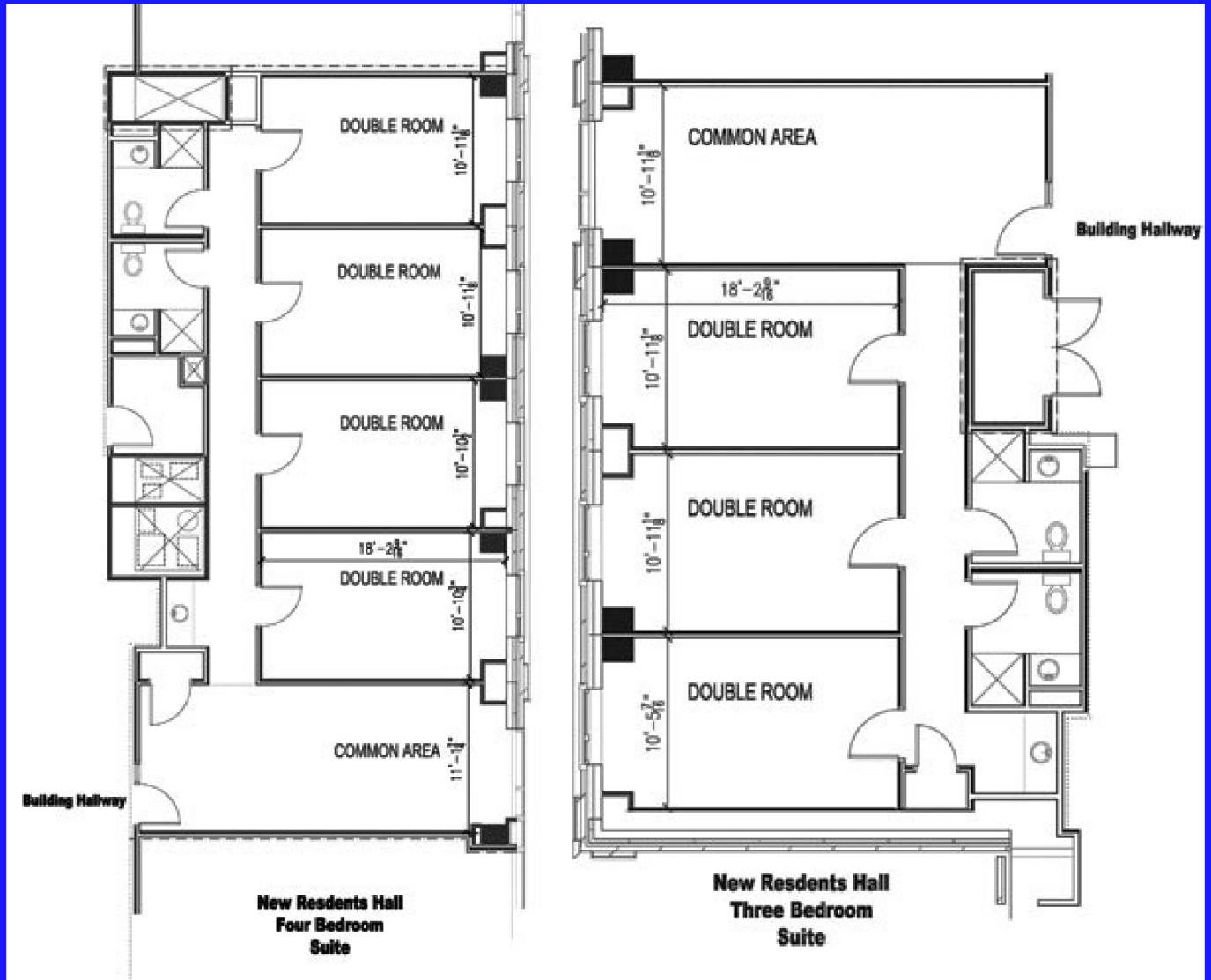
Full groups of 6 and 8 will learn about whether they have secured space in Justice prior to room selection times going out. If successful in that process, they will be preassigned to a suite and agree to accept the suite preassigned to them.

If unsuccessful, they will be given time to reconfigure into smaller groups and be assigned selection times to select space.

Why don't you conduct selection during evening or on weekends?

We think it is important to be readily available for students to be able to answer in-the-moment questions or troubleshoot issues. Our experience is that at least one member of the group is available during the group selection time.

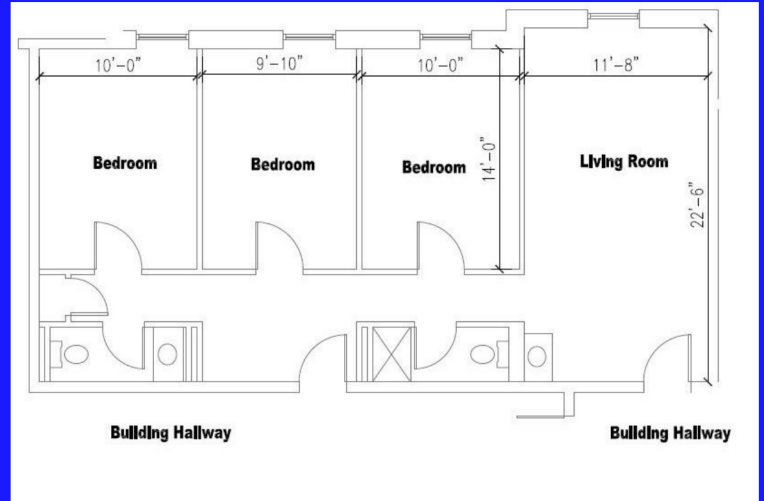
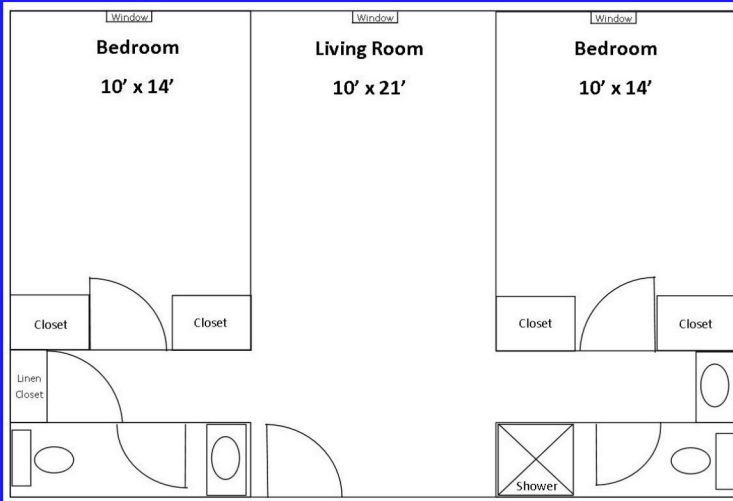
FLOOR PLANS



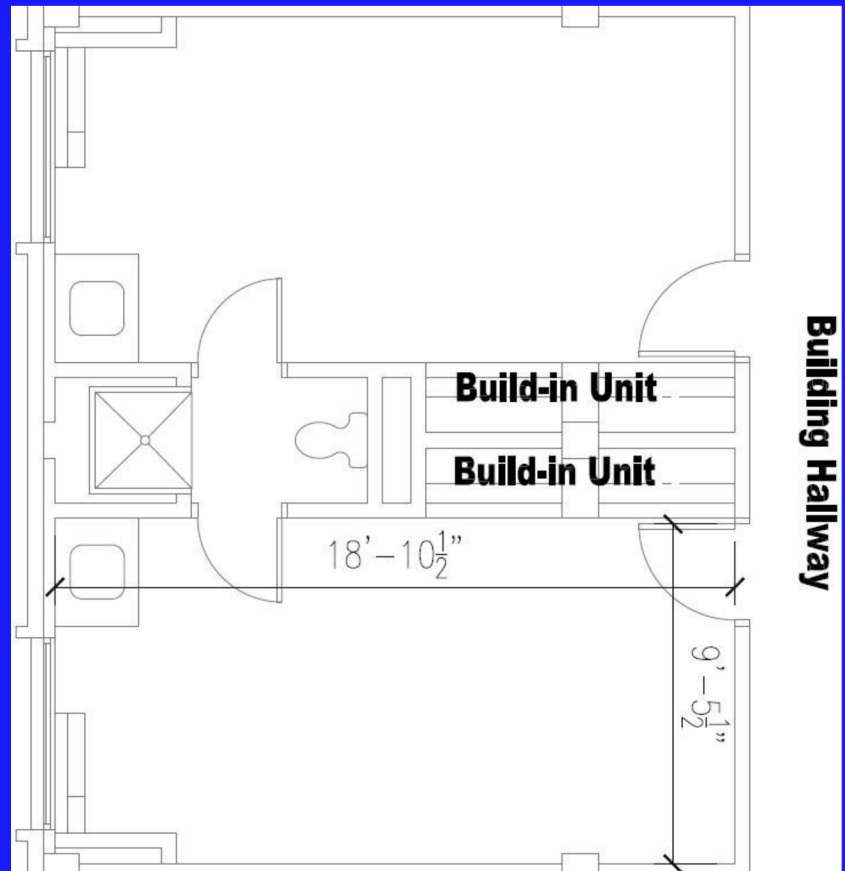
JUSTICE HALL SUITES

FLOOR PLANS

THE 3RD AND 4TH FLOORS OF BUENGER ARE RESERVED
FOR RISING SOPHOMORES (CO-ED FLOORS)

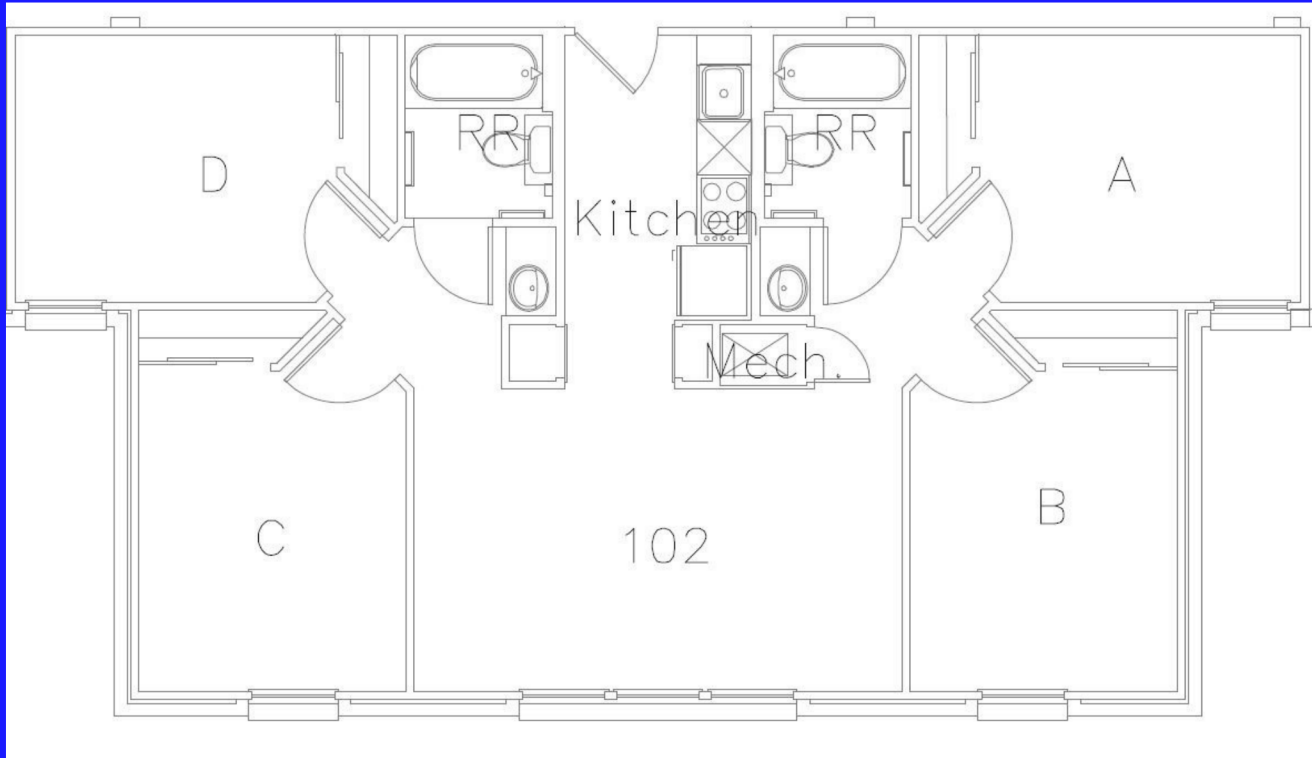


THE TOP
FLOORS OF
KUHLMAN ARE
RESERVED FOR
RISING
SOPHOMORES

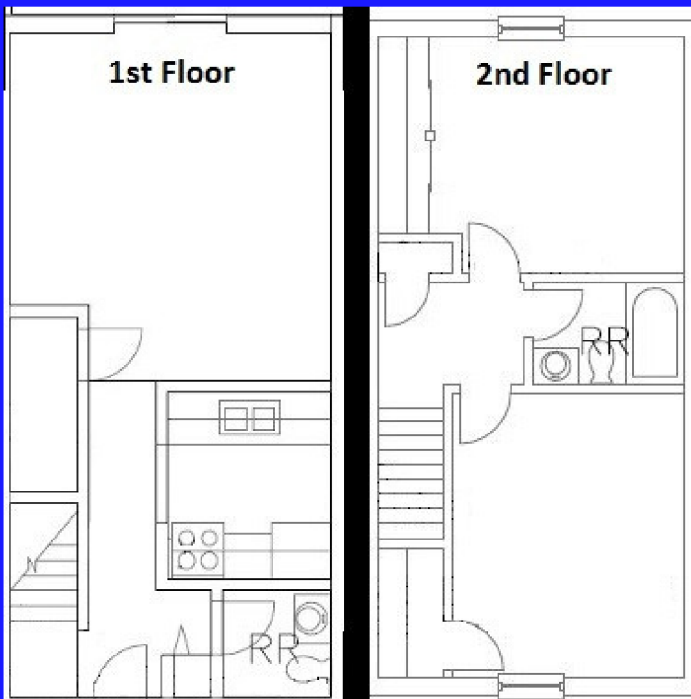


FLOOR PLANS

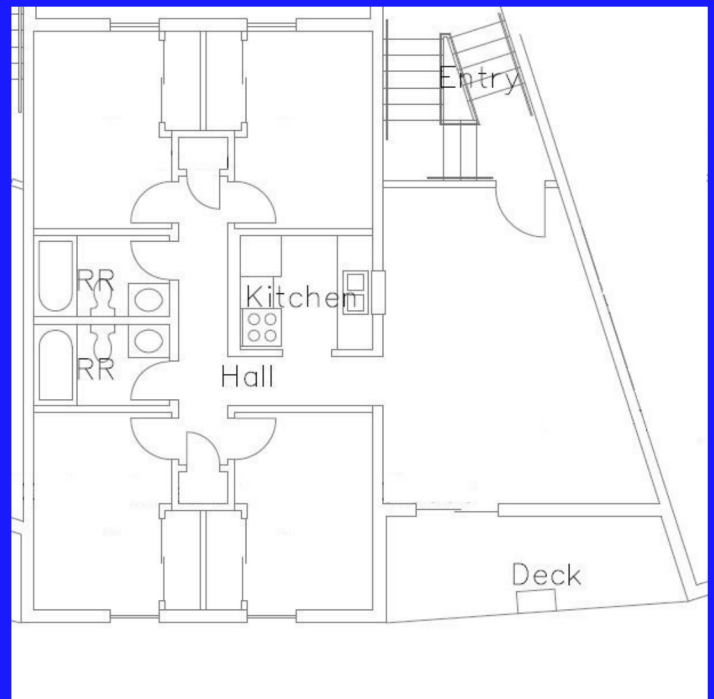
COMMONS APARTMENTS



VILLAGE APARTMENTS



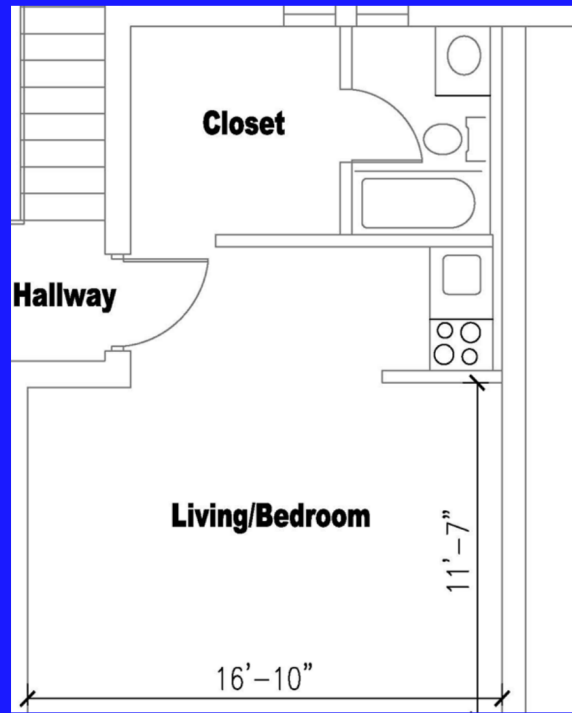
Two Bedroom Townhouse



Four Person Single Bedrooms

FLOOR PLANS

MANOR HOUSE



UNIVERSITY APARTMENTS

