

AI Resources:

Turnitin Rubric:

[Turnitin AI Misuse Rubric Guide.pdf](#)

AI Misuse Checklist:

[tli ai misusechecklist us 0223.pdf](#)

Student Guide to AI:

[Student-Guide-to-AI-final-081224.pdf](#)

Use of Audio Assignments:

[audioassignmentsAI.pdf](#)

AI Professional Development

[AIMath.pdf](#)

AI Ideas for Faculty:

[AIideas.pdf](#)

AI Implementation Recommendations:

[AI.pdf](#)

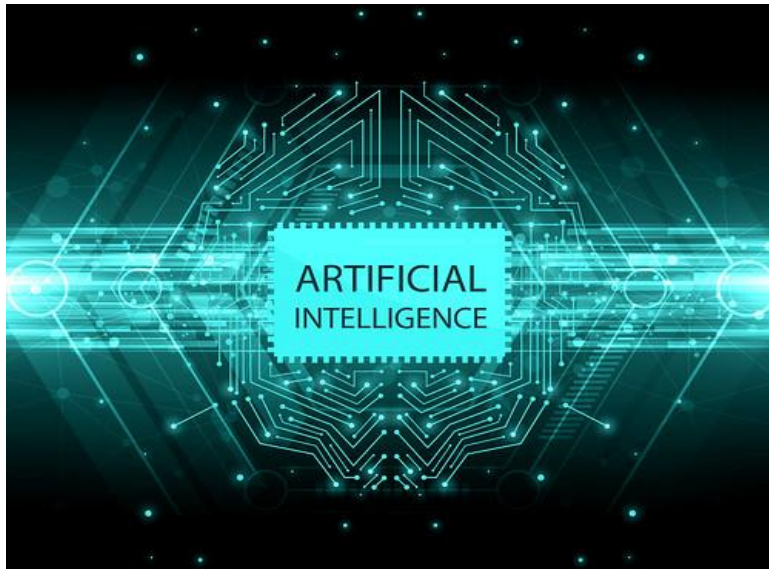
Syllabus statement (under plagiarism):

Plagiarism is a form of academic dishonesty that involves the presentation, willful or unwitting, of someone else's work as one's own. This includes the use of direct quotations and paraphrases, as well as excessive borrowing of the organizational pattern of a given source. Such sources include, but are not limited to, visual and printed materials, manuscripts, other students' work and classroom lectures. (see catalog for more details).

The use of artificial intelligence is permitted for brainstorming and ideas, but must be cited in any submitted work.

Everyday AI Link (Jordan Wilson):

[Everyday AI Podcast and AI Newsletter | Helping everyday people use AI](#)



[This Photo](#) by Unknown Author is licensed under [CC BY](#)