

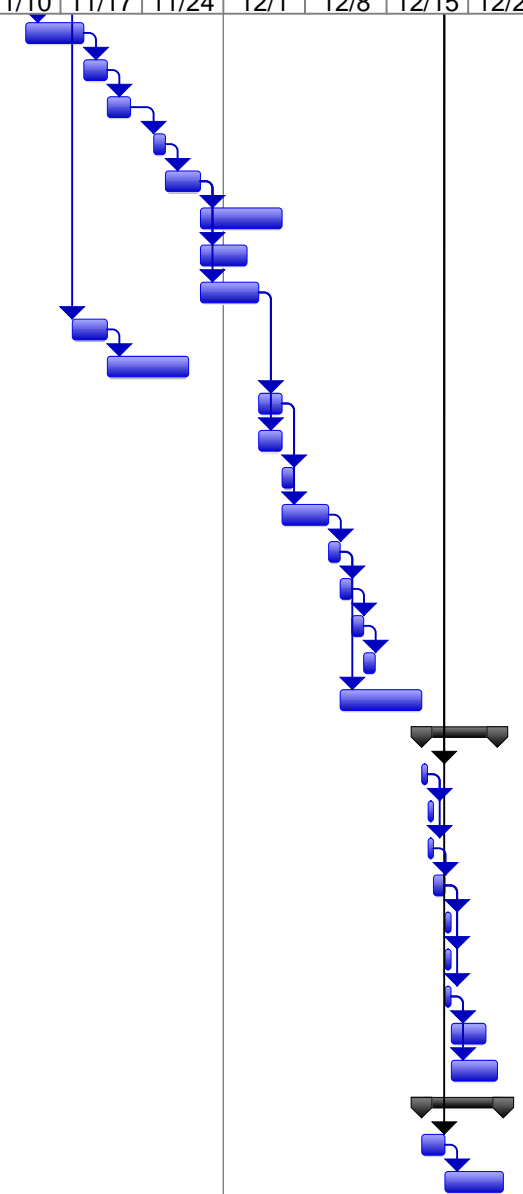
CINTAS KITCHEN - CONSTRUCTION SCHEDULE - 9-25-13

| ID | Task Name | Duration | Start | Finish | Predecessors | September | | | | | | | October | | | | November | | | December | | Janu | | | | | | |
|----|--|----------------|---------------------|---------------------|--------------|---|-----|------|------|------|------|-------|---------|-------|------|-------|----------|-------|------|----------|-------|-------|-------|--|--|--|--|--|
| | | | | | | 9/1 | 9/8 | 9/15 | 9/22 | 9/29 | 10/6 | 10/13 | 10/20 | 10/27 | 11/3 | 11/10 | 11/17 | 11/24 | 12/1 | 12/8 | 12/15 | 12/22 | 12/29 | | | | | |
| 1 | CINTAS CLASSROOMS | 82 days | Mon 9/2/13 | Tue 12/24/13 | | CINTAS C | | | | | | | | | | | | | | | | | | | | | | |
| 2 | DESIGN PHASE | 47 days | Mon 9/2/13 | Tue 11/5/13 | | DESIGN PHASE | | | | | | | | | | | | | | | | | | | | | | |
| 3 | MEP Coordination | 18 days | Mon 9/2/13 | Wed 9/25/13 | | MEP Coordination | | | | | | | | | | | | | | | | | | | | | | |
| 4 | Permitting | 30 days | Wed 9/25/13 | Tue 11/5/13 | | Permitting | | | | | | | | | | | | | | | | | | | | | | |
| 5 | Submission | 1 day | Wed 9/25/13 | Wed 9/25/13 | | Submission | | | | | | | | | | | | | | | | | | | | | | |
| 6 | Review Period | 15 days | Thu 9/26/13 | Wed 10/16/13 | 5 | Review Period | | | | | | | | | | | | | | | | | | | | | | |
| 7 | Permit Approved | 1 day | Thu 10/17/13 | Thu 10/17/13 | 6 | Permit Approved | | | | | | | | | | | | | | | | | | | | | | |
| 8 | Health Department Permit | 30 days | Wed 9/25/13 | Tue 11/5/13 | | Health Department Permit | | | | | | | | | | | | | | | | | | | | | | |
| 9 | BIDDING PHASE | 13 days | Wed 9/25/13 | Fri 10/11/13 | | BIDDING PHASE | | | | | | | | | | | | | | | | | | | | | | |
| 10 | Bid Period | 10 days | Wed 9/25/13 | Tue 10/8/13 | | Bid Period | | | | | | | | | | | | | | | | | | | | | | |
| 11 | Pre-Bid Walk Thru | 1 day | Mon 9/30/13 | Mon 9/30/13 | | Pre-Bid Walk Thru | | | | | | | | | | | | | | | | | | | | | | |
| 12 | Bid Date | 1 day | Wed 10/9/13 | Wed 10/9/13 | | Bid Date | | | | | | | | | | | | | | | | | | | | | | |
| 13 | Award | 2 days | Thu 10/10/13 | Fri 10/11/13 | 12 | Award | | | | | | | | | | | | | | | | | | | | | | |
| 14 | PROCUREMENT PHASE | 25 days | Mon 10/14/13 | Fri 11/15/13 | | PROCUREMENT PHASE | | | | | | | | | | | | | | | | | | | | | | |
| 15 | Order Long Lead Time Material: | 10 days | Mon 10/14/13 | Fri 10/25/13 | 13 | Order Long Lead Time Material: | | | | | | | | | | | | | | | | | | | | | | |
| 16 | Order Long Lead Time Material: Kitchen Equipment | 25 days | Mon 10/14/13 | Fri 11/15/13 | 13 | Order Long Lead Time Material: Kitchen Equipm | | | | | | | | | | | | | | | | | | | | | | |
| 17 | Order Long Lead Time Material: | 15 days | Mon 10/14/13 | Fri 11/1/13 | 13 | Order Long Lead Time Material: | | | | | | | | | | | | | | | | | | | | | | |
| 18 | Order Long Lead Time Material: | 20 days | Mon 10/14/13 | Fri 11/8/13 | 13 | Order Long Lead Time Material: | | | | | | | | | | | | | | | | | | | | | | |
| 19 | CONSTRUCTION PHASE | 50 days | Wed 10/16/13 | Tue 12/24/13 | | CONSTR | | | | | | | | | | | | | | | | | | | | | | |
| 20 | BACK KITCHEN AREA | 45 days | Wed 10/16/13 | Tue 12/17/13 | | BACK KITCHEN AREA | | | | | | | | | | | | | | | | | | | | | | |
| 21 | Install Construction Barricades | 1 day | Wed 10/16/13 | Wed 10/16/13 | 13SF+5 days | Install Construction Barricades | | | | | | | | | | | | | | | | | | | | | | |
| 22 | Move Kitchen Equipment to Storage | 1 day | Wed 10/16/13 | Wed 10/16/13 | 21SS | Move Kitchen Equipment to Storage | | | | | | | | | | | | | | | | | | | | | | |
| 23 | Remove Ceiling Pads | 1 day | Thu 10/17/13 | Thu 10/17/13 | 22 | Remove Ceiling Pads | | | | | | | | | | | | | | | | | | | | | | |
| 24 | Secure Lights | 1 day | Fri 10/18/13 | Fri 10/18/13 | 23 | Secure Lights | | | | | | | | | | | | | | | | | | | | | | |
| 25 | Secure Diffusers | 1 day | Fri 10/18/13 | Fri 10/18/13 | 23 | Secure Diffusers | | | | | | | | | | | | | | | | | | | | | | |
| 26 | Remove Ceiling Grid | 2 days | Mon 10/21/13 | Tue 10/22/13 | 24,25 | Remove Ceiling Grid | | | | | | | | | | | | | | | | | | | | | | |
| 27 | Demo Ductwork | 5 days | Wed 10/23/13 | Tue 10/29/13 | 26 | Demo Ductwork | | | | | | | | | | | | | | | | | | | | | | |
| 28 | Demo Hoods | 2 days | Wed 10/23/13 | Thu 10/24/13 | 26 | Demo Hoods | | | | | | | | | | | | | | | | | | | | | | |
| 29 | Relocate Ansul Systems | 2 days | Wed 10/23/13 | Thu 10/24/13 | 26 | Relocate Ansul Systems | | | | | | | | | | | | | | | | | | | | | | |
| 30 | Punch thru new opening | 1 day | Wed 10/23/13 | Wed 10/23/13 | 26 | Punch thru new opening | | | | | | | | | | | | | | | | | | | | | | |
| 31 | Demo Walls | 1 day | Thu 10/24/13 | Thu 10/24/13 | 30 | Demo Walls | | | | | | | | | | | | | | | | | | | | | | |
| 32 | Wall Framing | 2 days | Fri 10/25/13 | Mon 10/28/13 | 31 | Wall Framing | | | | | | | | | | | | | | | | | | | | | | |
| 33 | Relocate Walk In | 4 days | Tue 10/29/13 | Fri 11/1/13 | 32 | Relocate Walk In | | | | | | | | | | | | | | | | | | | | | | |
| 34 | New Ductwork | 5 days | Tue 10/29/13 | Mon 11/4/13 | 32 | New Ductwork | | | | | | | | | | | | | | | | | | | | | | |
| 35 | Sprinklers | 2 days | Mon 11/4/13 | Tue 11/5/13 | 33 | Sprinklers | | | | | | | | | | | | | | | | | | | | | | |
| 36 | Above Ceiling Electric/Fire Alarm | 3 days | Tue 10/29/13 | Thu 10/31/13 | 32 | Above Ceiling Electric/Fire Alarm | | | | | | | | | | | | | | | | | | | | | | |
| 37 | In Wall Plumbing & Electric | 3 days | Tue 10/29/13 | Thu 10/31/13 | 32 | In Wall Plumbing & Electric | | | | | | | | | | | | | | | | | | | | | | |
| 38 | Hang & Finish Drywall | 5 days | Tue 11/5/13 | Mon 11/11/13 | 34 | Hang & Finish Drywall | | | | | | | | | | | | | | | | | | | | | | |
| 39 | FRP Wall Protection | 2 days | Tue 11/12/13 | Wed 11/13/13 | 38 | FRP Wall Protection | | | | | | | | | | | | | | | | | | | | | | |

| | | | | | | | |
|--|-----------------|--|--------------------|--|-----------------------|--|-------------|
| Project: Cintas Kitchen Schedule 09-20 Date: Thu 9/26/13 By: Joe Frecker, XU Const. Mgr. | Task | | External Tasks | | Manual Task | | Finish-only |
| | Split | | External Milestone | | Duration-only | | Progress |
| | Milestone | | Inactive Task | | Manual Summary Rollup | | Deadline |
| | Summary | | Inactive Milestone | | Manual Summary | | |
| | Project Summary | | Inactive Summary | | Start-only | | |

CINTAS KITCHEN - CONSTRUCTION SCHEDULE - 9-25-13

| ID | Task Name | Duration | Start | Finish | Predecessors | September | | | | October | | | | November | | | | December | | | | Janu | |
|----|---|-----------------|---------------------|---------------------|--------------|-----------|-----|------|------|---------|------|-------|-------|----------|------|-------|-------|----------|------|------|-------|-------|-------|
| | | | | | | 9/1 | 9/8 | 9/15 | 9/22 | 9/29 | 10/6 | 10/13 | 10/20 | 10/27 | 11/3 | 11/10 | 11/17 | 11/24 | 12/1 | 12/8 | 12/15 | 12/22 | 12/29 |
| 40 | New Ceiling Grid | 3 days | Thu 11/14/13 | Mon 11/18/13 | 39 | | | | | | | | | | | | | | | | | | |
| 41 | Re-Set Lights & Grills | 2 days | Tue 11/19/13 | Wed 11/20/13 | 40 | | | | | | | | | | | | | | | | | | |
| 42 | New Lights & Diffusers | 2 days | Thu 11/21/13 | Fri 11/22/13 | 41 | | | | | | | | | | | | | | | | | | |
| 43 | Above Ceiling Inspection | 1 day | Mon 11/25/13 | Mon 11/25/13 | 42 | | | | | | | | | | | | | | | | | | |
| 44 | Ceiling Pads | 3 days | Tue 11/26/13 | Thu 11/28/13 | 43 | | | | | | | | | | | | | | | | | | |
| 45 | Floor Tile | 5 days | Fri 11/29/13 | Thu 12/5/13 | 44 | | | | | | | | | | | | | | | | | | |
| 46 | Doors & Hardware | 2 days | Fri 11/29/13 | Mon 12/2/13 | 44 | | | | | | | | | | | | | | | | | | |
| 47 | Painting | 3 days | Fri 11/29/13 | Tue 12/3/13 | 44 | | | | | | | | | | | | | | | | | | |
| 48 | New Kitchen Equipment | 3 days | Mon 11/18/13 | Wed 11/20/13 | 16 | | | | | | | | | | | | | | | | | | |
| 49 | Plumbing & Electric Equipment Connections | 5 days | Thu 11/21/13 | Wed 11/27/13 | 48 | | | | | | | | | | | | | | | | | | |
| 50 | Accessories | 2 days | Wed 12/4/13 | Thu 12/5/13 | 47 | | | | | | | | | | | | | | | | | | |
| 51 | Electric/Fire Alarm Devices, Plates | 2 days | Wed 12/4/13 | Thu 12/5/13 | 47 | | | | | | | | | | | | | | | | | | |
| 52 | Remove Barricade | 1 day | Fri 12/6/13 | Fri 12/6/13 | 50 | | | | | | | | | | | | | | | | | | |
| 53 | Thorough Cleaning | 2 days | Fri 12/6/13 | Mon 12/9/13 | 50 | | | | | | | | | | | | | | | | | | |
| 54 | Return Equipment from Storage | 1 day | Tue 12/10/13 | Tue 12/10/13 | 53 | | | | | | | | | | | | | | | | | | |
| 55 | Building Dept Inspection | 1 day | Wed 12/11/13 | Wed 12/11/13 | 54 | | | | | | | | | | | | | | | | | | |
| 56 | Health Department Inspection | 1 day | Thu 12/12/13 | Thu 12/12/13 | 55 | | | | | | | | | | | | | | | | | | |
| 57 | Certificate Of Occupancy | 1 day | Fri 12/13/13 | Fri 12/13/13 | 56 | | | | | | | | | | | | | | | | | | |
| 58 | Punchlist | 5 days | Wed 12/11/13 | Tue 12/17/13 | 54 | | | | | | | | | | | | | | | | | | |
| 59 | FRONT KITCHEN AREA | 4.5 days | Wed 12/18/13 | Tue 12/24/13 | | | | | | | | | | | | | | | | | | | |
| 60 | Remove Ceiling Pads | 0.5 days | Wed 12/18/13 | Wed 12/18/13 | 20 | | | | | | | | | | | | | | | | | | |
| 61 | Secure Lights | 0.5 days | Wed 12/18/13 | Wed 12/18/13 | 60 | | | | | | | | | | | | | | | | | | |
| 62 | Remove Ceiling Grid | 0.5 days | Wed 12/18/13 | Wed 12/18/13 | 60 | | | | | | | | | | | | | | | | | | |
| 63 | New Ceiling Grid | 1 day | Thu 12/19/13 | Thu 12/19/13 | 62 | | | | | | | | | | | | | | | | | | |
| 64 | Re-Set Lights | 0.5 days | Fri 12/20/13 | Fri 12/20/13 | 63 | | | | | | | | | | | | | | | | | | |
| 65 | New Lights & Diffusers | 0.5 days | Fri 12/20/13 | Fri 12/20/13 | 63 | | | | | | | | | | | | | | | | | | |
| 66 | Ceiling Pads | 0.5 days | Fri 12/20/13 | Fri 12/20/13 | 63 | | | | | | | | | | | | | | | | | | |
| 67 | Thorough Cleaning | 1 day | Fri 12/20/13 | Mon 12/23/13 | 66 | | | | | | | | | | | | | | | | | | |
| 68 | Floor Tile Grout Repairs | 2 days | Fri 12/20/13 | Tue 12/24/13 | 66 | | | | | | | | | | | | | | | | | | |
| 69 | OLD DISHWASHING AREA | 5 days | Wed 12/18/13 | Tue 12/24/13 | | | | | | | | | | | | | | | | | | | |
| 70 | Remove Plumbing ans Electric | 2 days | Wed 12/18/13 | Thu 12/19/13 | 20 | | | | | | | | | | | | | | | | | | |
| 71 | Remove Dishwasher | 3 days | Fri 12/20/13 | Tue 12/24/13 | 70 | | | | | | | | | | | | | | | | | | |



| | | | | | | | | |
|--|-----------------|--|--------------------|--|-----------------------|--|-------------|--|
| Project: Cintas Kitchen Schedule 09-20 Date: Thu 9/26/13 By: Joe Frecker, XU Const. Mgr. | Task | | External Tasks | | Manual Task | | Finish-only | |
| | Split | | External Milestone | | Duration-only | | Progress | |
| | Milestone | | Inactive Task | | Manual Summary Rollup | | Deadline | |
| | Summary | | Inactive Milestone | | Manual Summary | | | |
| | Project Summary | | Inactive Summary | | Start-only | | | |