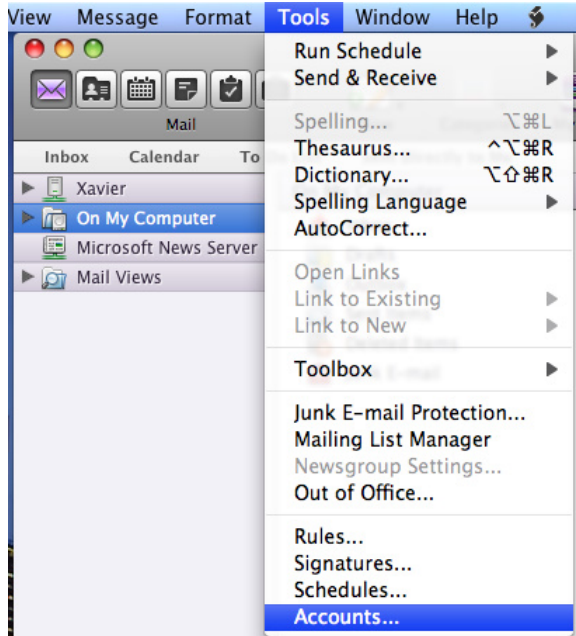
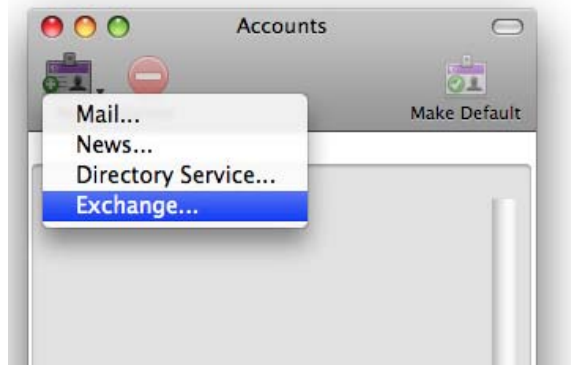


# Basic Set-up of Entourage 2008 to Connect to Xavier Exchange

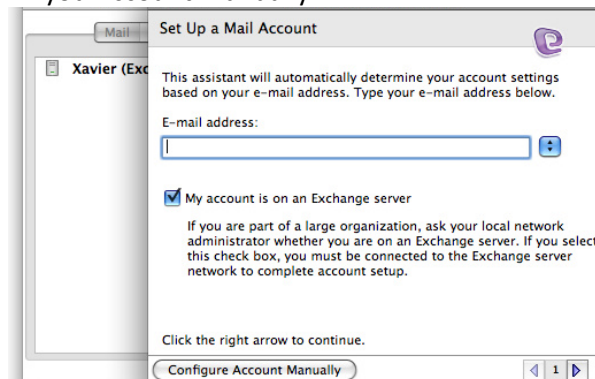
1. Click on “Tools” and then choose “Accounts”



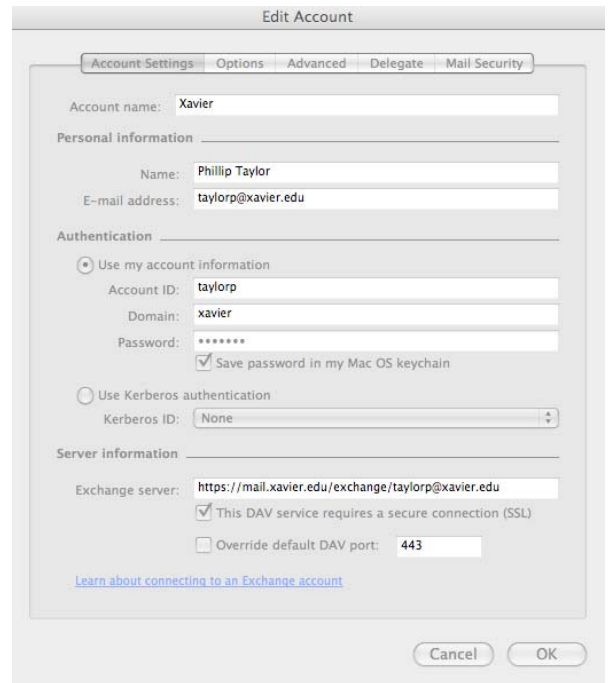
2. Click on “Mail” and then choose “Exchange”



3. Input your email address and click on “Configure you Account Manually”



4. Fill out the following fields, using your own email address. Note the server path should contain your email address.



5. Click on the advanced tab and put a check in the “This DAV service requires a secure connection (SSL)”. Under Directory Settings, type the following – nocdc01. No other check marks need to be selected. Click OK.

